

4*1000Base-X +8*10/100/1000Base-T Unmanaged Ethernet Switch

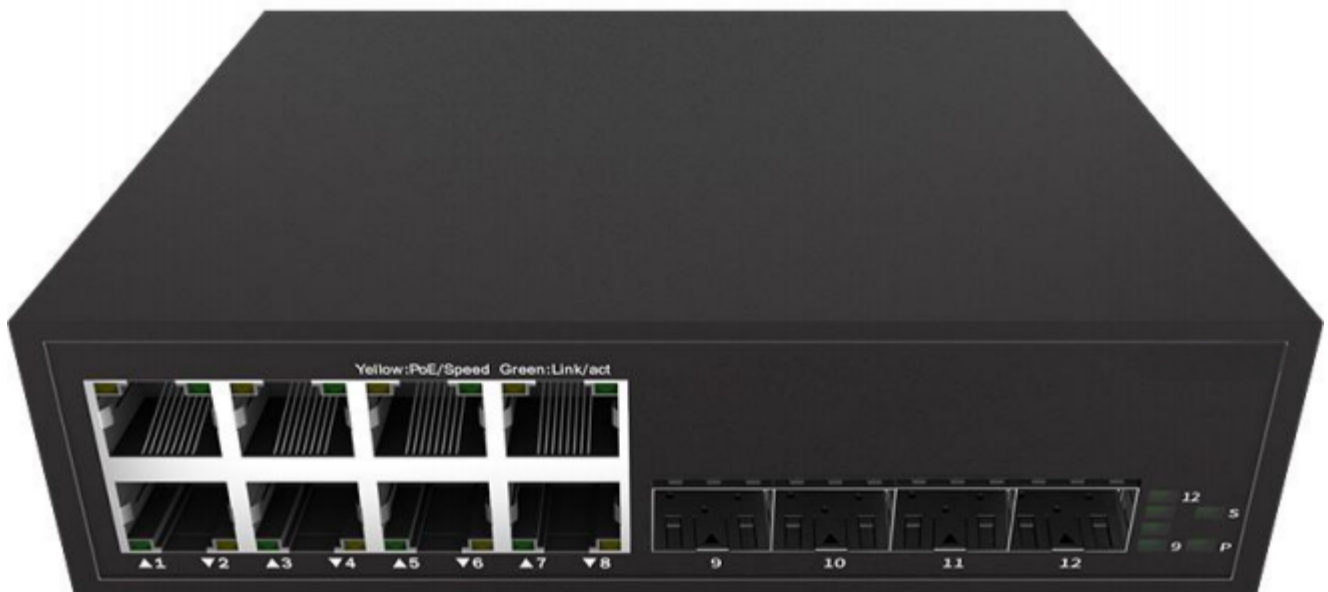
LT-S6012G-4GX8GT: 4*1G SFP + 8*10/100/1000Base-T

LT-S6012G-4GX8GT-SC: 4*1G SC fiber ports +8*10/100/1000Base-T

Overview:

LT-S6012G series switches are layer 2 Gigabit unmanaged switches, with the energy-saving trend worldwide, it comes with all Gigabit ports guarantee stable transmission of data. Its compact metal housing makes the deployment of Gigabit networks easy for homes, SOHOs and SMBs that are space limited. The operating switch is noiseless as it has a fan-less feature.

Picture



Features:

- 8*10/100/1000M RJ45 access with 4* 1G SFP or SC uplink
- Complies with IEEE 802.3, 10BASE-T, IEEE 802.3u 100BASE-TX, IEEE 802.3ab 1000BASE-T
- Supports auto MDI/MDI-X function
- Supports 12Mbits large buffer
- Wire-speed forwarding and non-blocking design.
- Store-and-forward switching
- Metal housing, desktop size and wall-mount design
- 4KV surge protection for Ethernet ports

Technical specification

Model		LT-S6012G-4GX8GT	LT-S6012G-4GX8GT-SC
Ports	Fixed ports	4*1G SFP slots , 8*10/100/1000M RJ45 ports	4*1G SC fiber ports , 8*10/100/1000M RJ45 ports
	Port type	RJ45 port, full duplex, MDI/MDI-X adaptive	
	Operation mode	Store and forward	
Layer 2 switching	MAC address table	16K	
	Switching capacity	24G	24G
	Packet forwarding rate	17.856Mpps	17.856Mpps
	Buffer	12Mbits	
	polarity reversal	Support	
	Flow control	Support	
	Port mirroring	Support	

Network topology	Star topology	Support
	Bus topology	Support
Protection	Ethernet ports surge protection	IEC 61000-4-5 Level 4 (4KV) (10/700us)
General	Weight	Net weight 0.6kg
	Dimension(L*W*H)	152*115*44mm
	Operation temperature	0°C~+50°C
	Storage temperature	-40°C~+70°C
	Operation humidity	10%~90%RH (non-condensing)
	Storage humidity	5%~95%RH (non-condensing)
	Heat dissipation	Fan-less, natural cooling
	Input Voltage	DC5-16V
	Total consumption	< 10W

Order information

Model	Description
LT-S6012G-4GX8GT	Unmanaged Ethernet switch with 4* 1G SFP slots+ 8*10/100/1000 RJ45 ports , DC5-16V
LT-S6012G-4GX8GT-SC	Unmanaged Ethernet switch with 4*1G SC fiber ports +8*10/100/1000 RJ45 ports , DC5-16V